

PrintJob[Archiver]

Automated print-job archiving and redirection system.

or

Electronic Filing of Spool Data

Version 1.2

Introduction

1. Functionality

2. Installation and Configuration

Page 1

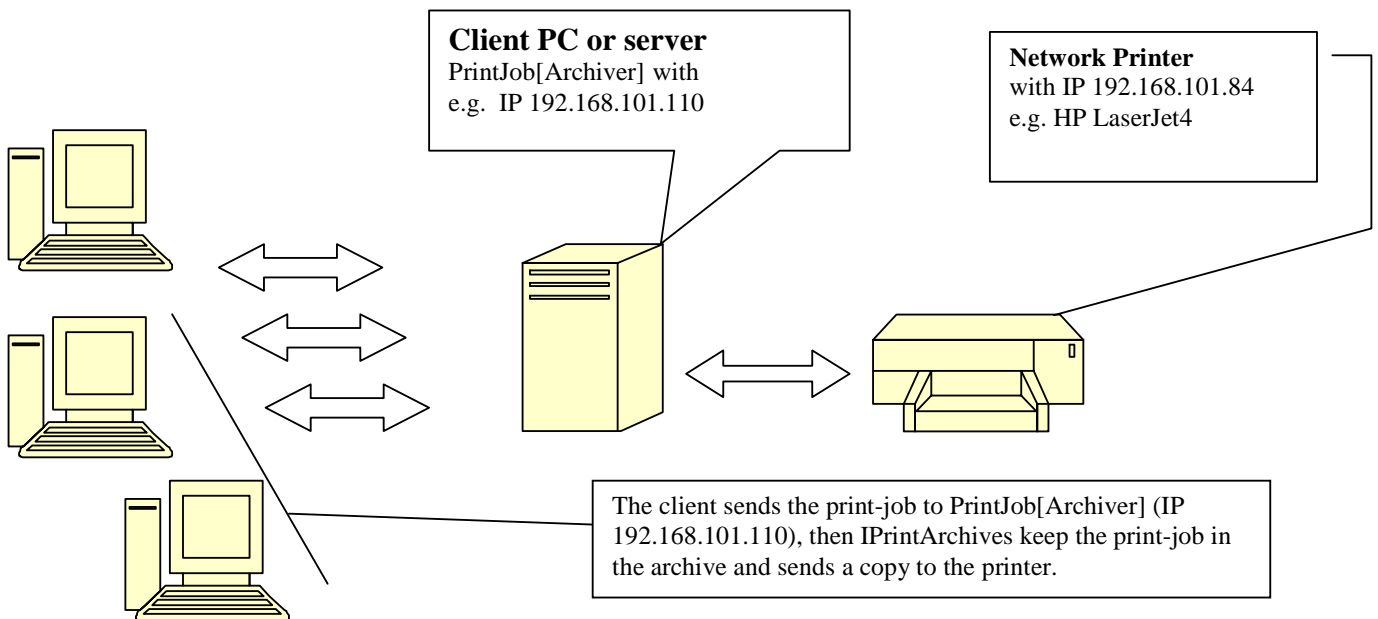
Page 2

I - Functionality.

The PrintJob[Archiver] is a comprehensive archival system for the Windows printing system.

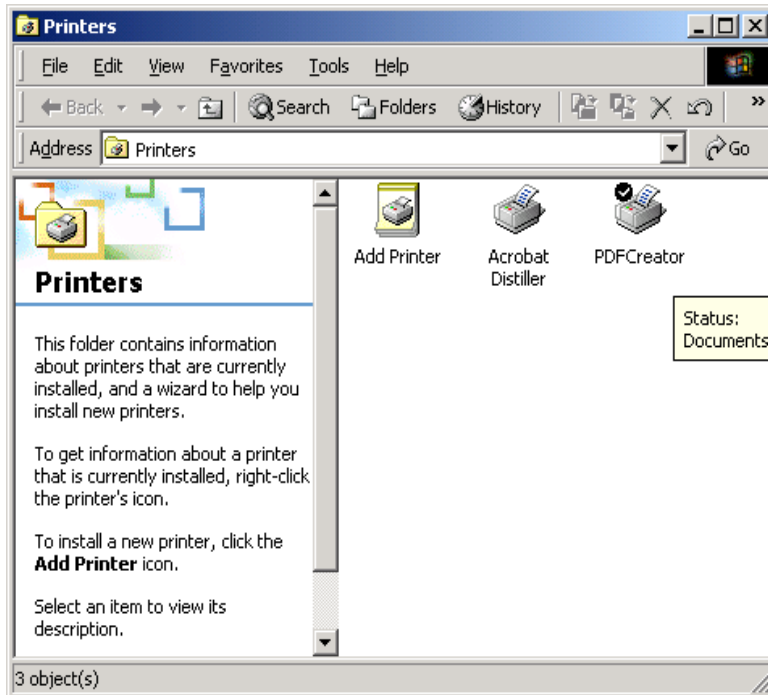
Print files are captured by PrintJob[Archiver]. The documents contained in the spool files may be retrieved at any time as well as printed out in a way that is identical the original.

PrintJob[Archiver] runs independently on a client PC or server.



I I - Installation and Configuration.

1. Logon to the Windows 2000 print client as an administrator. Select **Start**, then **Settings**, then **Printers**. The **Printers** folder should now be visible. Double-click on the **Add Printer** icon.



2. In the **Add Printer Wizard**, click **Next**



3. Click the **Local printer** radio button, and then click **Next**

The screenshot shows the 'Add Printer Wizard' dialog box. The title bar reads 'Add Printer Wizard'. The main heading is 'Local or Network Printer' with the question 'Is the printer attached to your computer?'. A printer icon is in the top right. The text below explains that if the printer is directly attached to the computer, 'Local printer' should be selected. If it's attached to another computer or the network, 'Network printer' should be selected. The 'Local printer' radio button is selected. There is a checkbox for 'Automatically detect and install my Plug and Play printer' which is unchecked. The 'Network printer' radio button is unselected. At the bottom are buttons for '< Back', 'Next >', and 'Cancel'.

Add Printer Wizard

Local or Network Printer
Is the printer attached to your computer?

If the printer is directly attached to your computer, click Local printer. If it is attached to another computer, or directly to the network, click Network printer.

Local printer
 Automatically detect and install my Plug and Play printer

Network printer

< Back Next > Cancel

4. Click Create a **new port**, and then click Standard TCP/IP Port.

The screenshot shows the 'Add Printer Wizard' dialog box. The title bar reads 'Add Printer Wizard'. The main heading is 'Select the Printer Port' with the text 'Computers communicate with printers through ports.' and a printer icon in the top right. The text below asks the user to select the port they want to use, noting that if the port is not listed, a new port can be created. There are two radio buttons: 'Use the following port:' (unchecked) and 'Create a new port:' (checked). Under 'Use the following port:', there is a table with columns 'Port', 'Description', and 'Printer'. The table lists LPT1, LPT2, LPT3, COM1, COM2, and COM3. Under 'Create a new port:', there is a 'Type:' label and a dropdown menu currently showing 'Standard TCP/IP Port'. At the bottom are buttons for '< Back', 'Next >', and 'Cancel'.

Add Printer Wizard

Select the Printer Port
Computers communicate with printers through ports.

Select the port you want your printer to use. If the port is not listed, you can create a new port.

Use the following port:

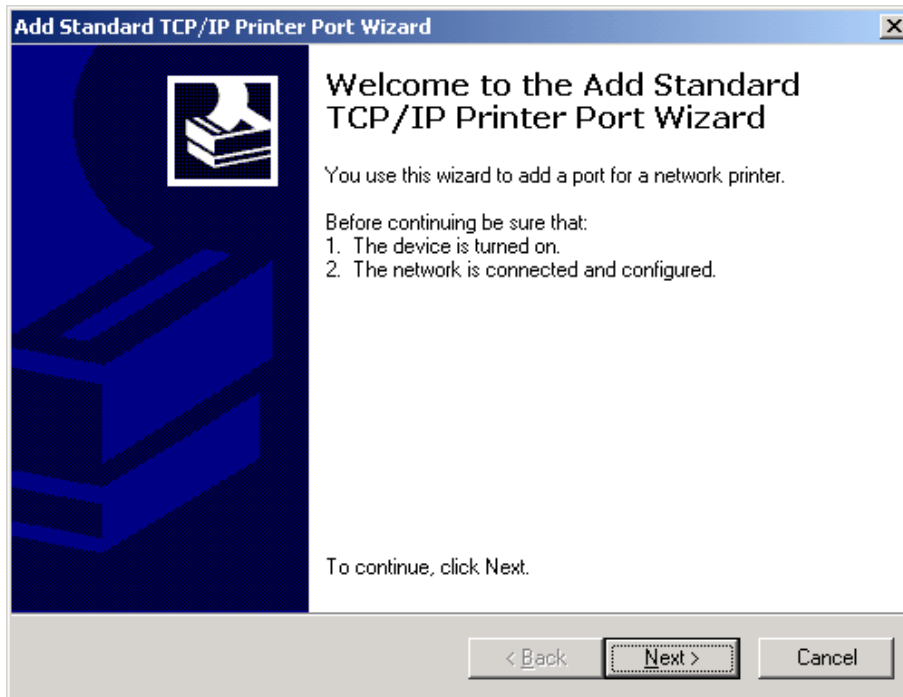
Port	Description	Printer
LPT1:	Printer Port	
LPT2:	Printer Port	
LPT3:	Printer Port	
COM1:	Serial Port	
COM2:	Serial Port	
COM3:	Serial Port	

Note: Most computers use the LPT1: port to communicate with a local printer.

Create a new port:
Type: Standard TCP/IP Port

< Back Next > Cancel

5. Click Next



6. Determine IP Address for **PrintJob[Archiver]** connection.

6.1 Determine IP Address with PrintJob[Archiver], see **step 7.**

Or

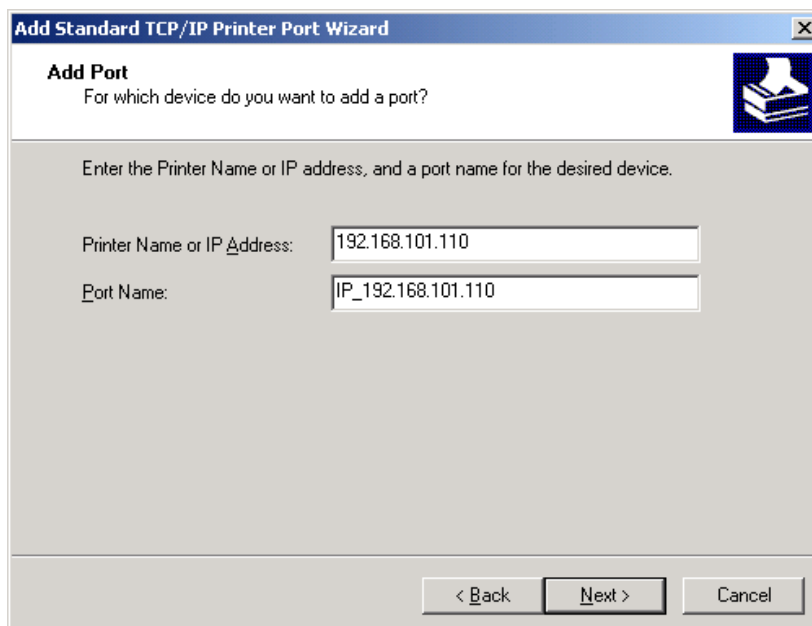
6.1 **IPCONFIG**

a) Click Start button Click Run

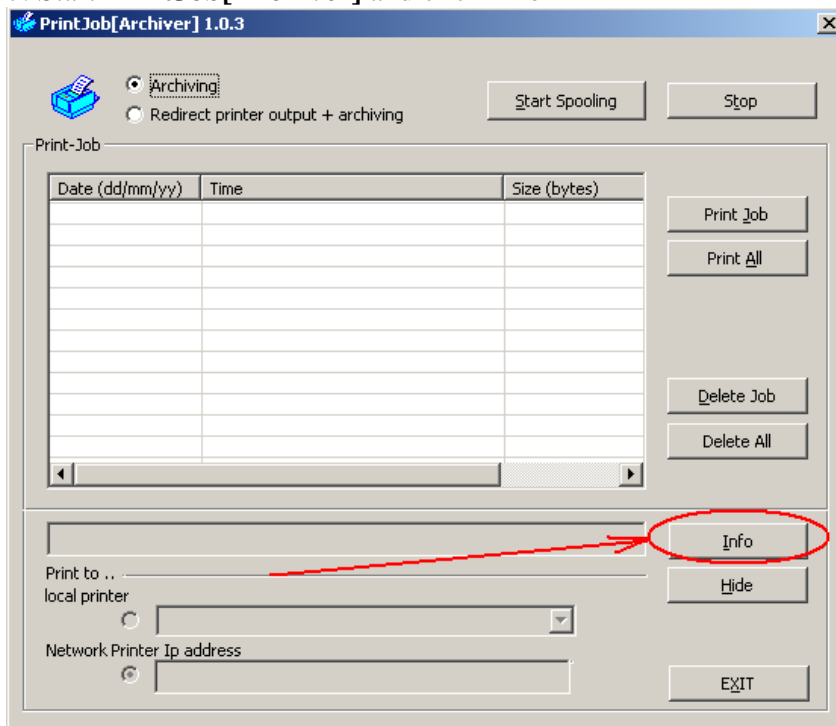
b) Type cmd in the Open text box

c) Click OK.

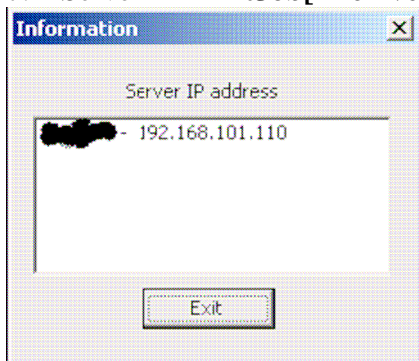
d) Type ipconfig and press <enter> on the prompt line in the black screen. **Note the IP address.** Click the X at top right of black window to close window.



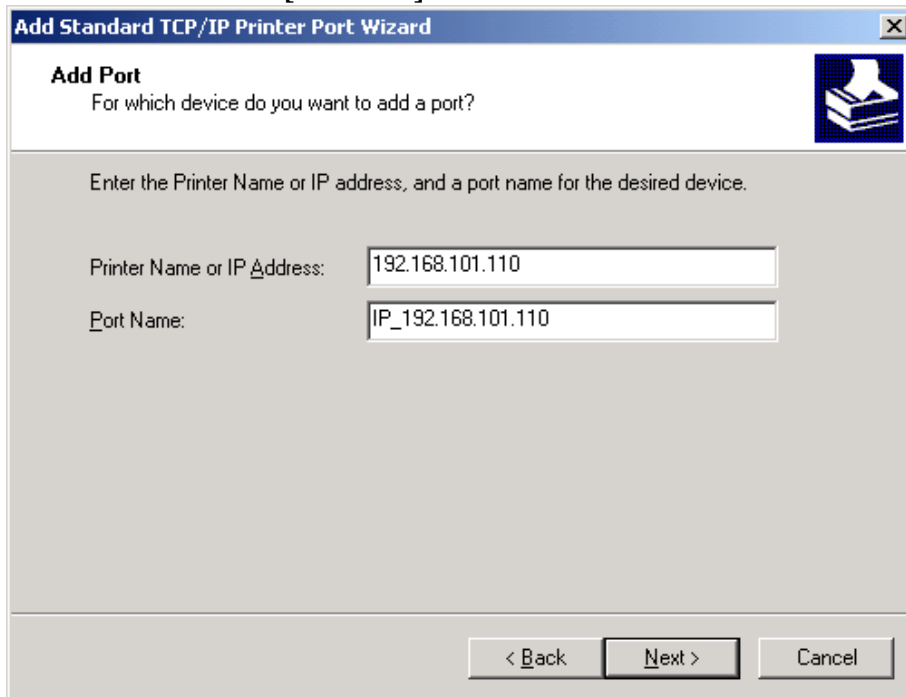
7. Start PrintJob[Archiver] and click Info



7.1 Server IP PrintJob[Archiver] address is 192.168.101.110



7. Enter the **PrintJob[Archiver]** server IP address.



Add Standard TCP/IP Printer Port Wizard

Add Port
For which device do you want to add a port?

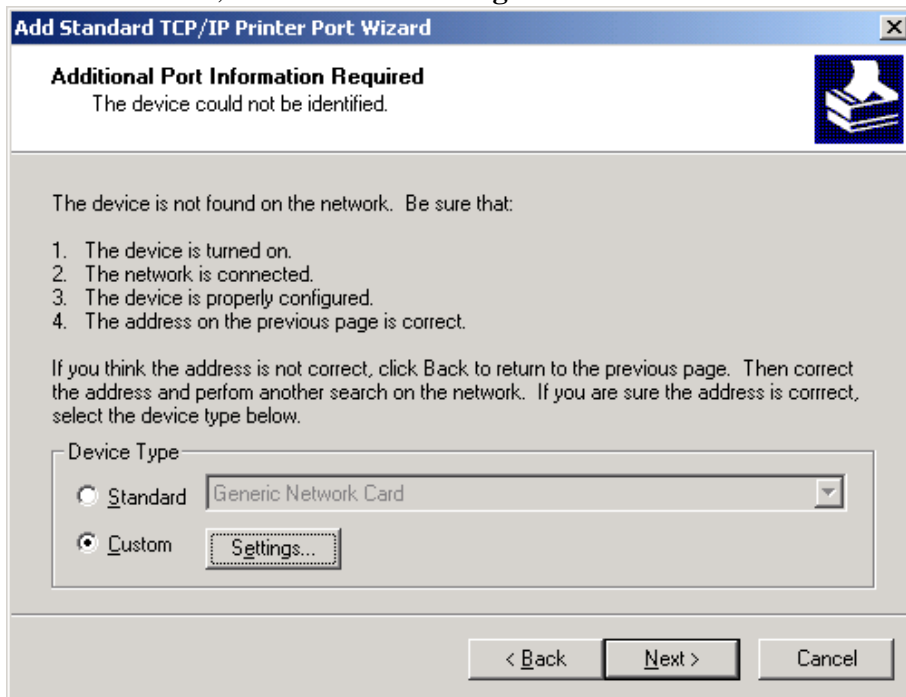
Enter the Printer Name or IP address, and a port name for the desired device.

Printer Name or IP Address: 192.168.101.110

Port Name: IP_192.168.101.110

< Back Next > Cancel

4. Click **Custom**, and then click **Settings....**



Add Standard TCP/IP Printer Port Wizard

Additional Port Information Required
The device could not be identified.

The device is not found on the network. Be sure that:

1. The device is turned on.
2. The network is connected.
3. The device is properly configured.
4. The address on the previous page is correct.

If you think the address is not correct, click Back to return to the previous page. Then correct the address and perform another search on the network. If you are sure the address is correct, select the device type below.

Device Type

Standard Generic Network Card

Custom Settings...

< Back Next > Cancel

4. Click **LPR-Protocol** and enter “Archiv” as the **Queue Name**.

Configure Standard TCP/IP Port Monitor

Port Settings

Port Name: IP_192.168.101.110

Printer Name or IP Address: 192.168.101.110

Protocol

Raw LPR

Raw Settings

Port Number: 9100

LPR Settings

Queue Name: Archiv

LPR Byte Counting Enabled

SNMP Status Enabled

Community Name: public

SNMP Device Index: 1

OK Cancel

5. Click **Finish**.

Add Standard TCP/IP Printer Port Wizard

Completing the Add Standard TCP/IP Printer Port Wizard

You have selected a port with the following characteristics.

SNMP: No

Protocol: LPR, Archiv

Device: 192.168.101.110

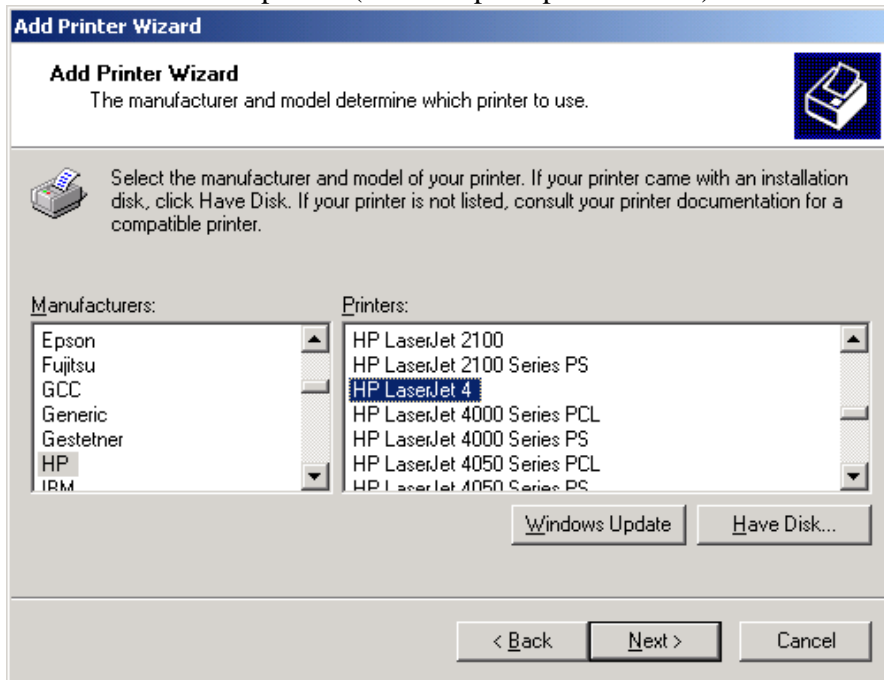
Port Name: IP_192.168.101.110

Adapter Type:

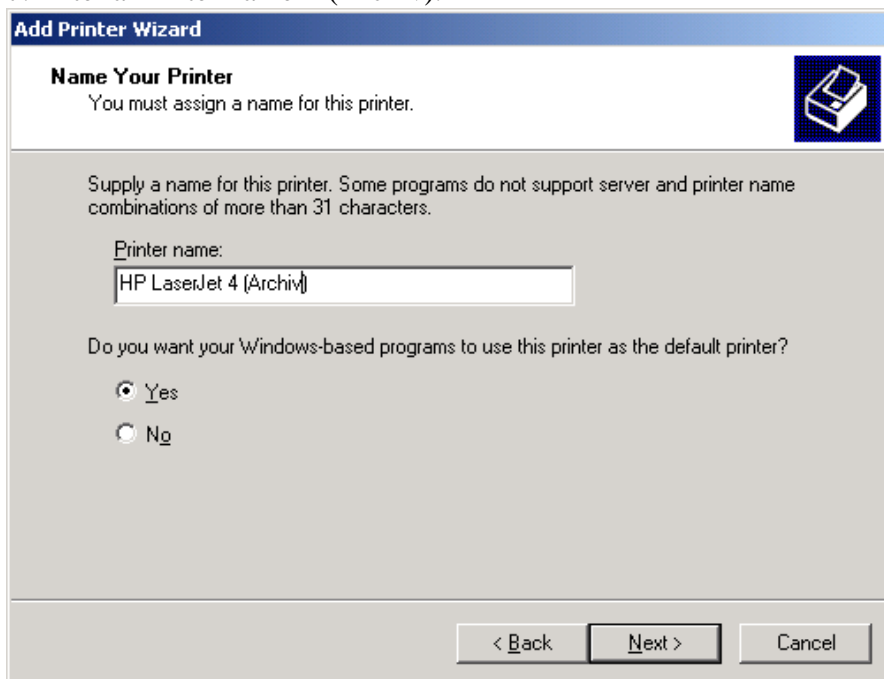
To complete this wizard, click Finish.

< Back Finish Cancel

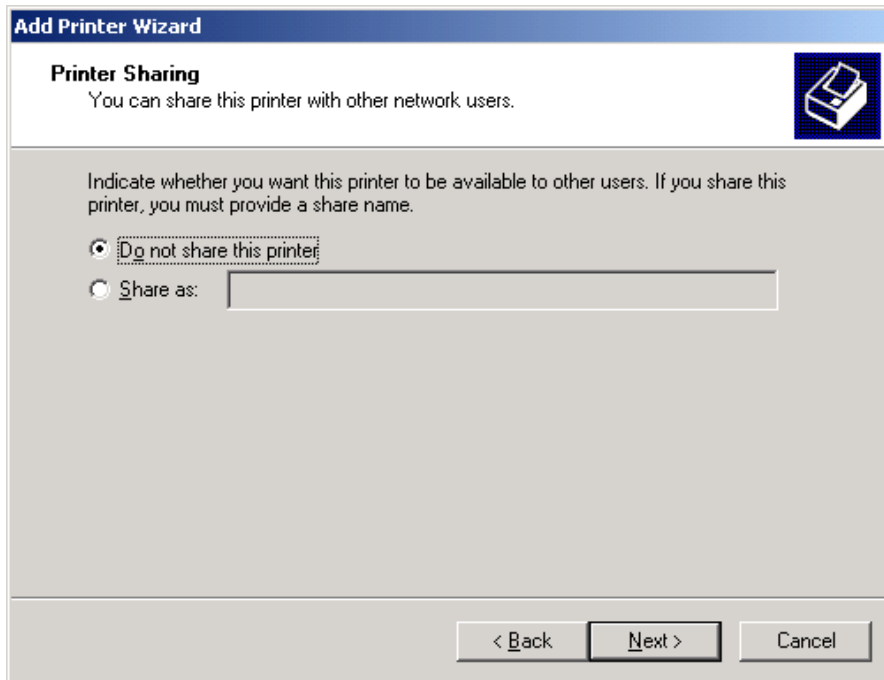
6. Select the correct printer (for example Hp LaserJet 4).



7. Enter a Printer name + (Archiv).



8. Click **Next**.



Add Printer Wizard

Printer Sharing
You can share this printer with other network users.

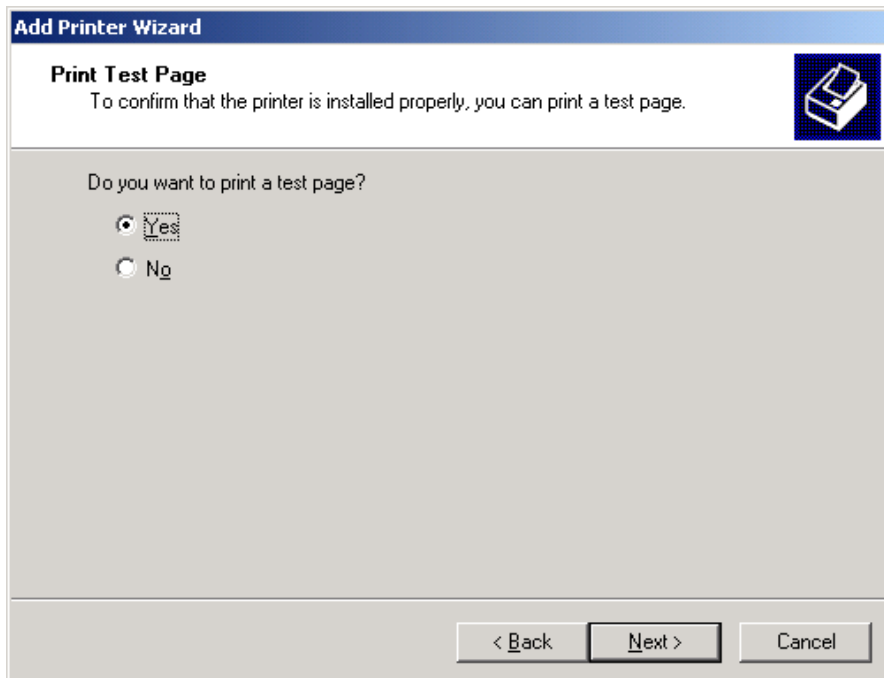
Indicate whether you want this printer to be available to other users. If you share this printer, you must provide a share name.

Do not share this printer

Share as:

< Back Next > Cancel

9. Click **Yes** then **Next**.



Add Printer Wizard

Print Test Page
To confirm that the printer is installed properly, you can print a test page.

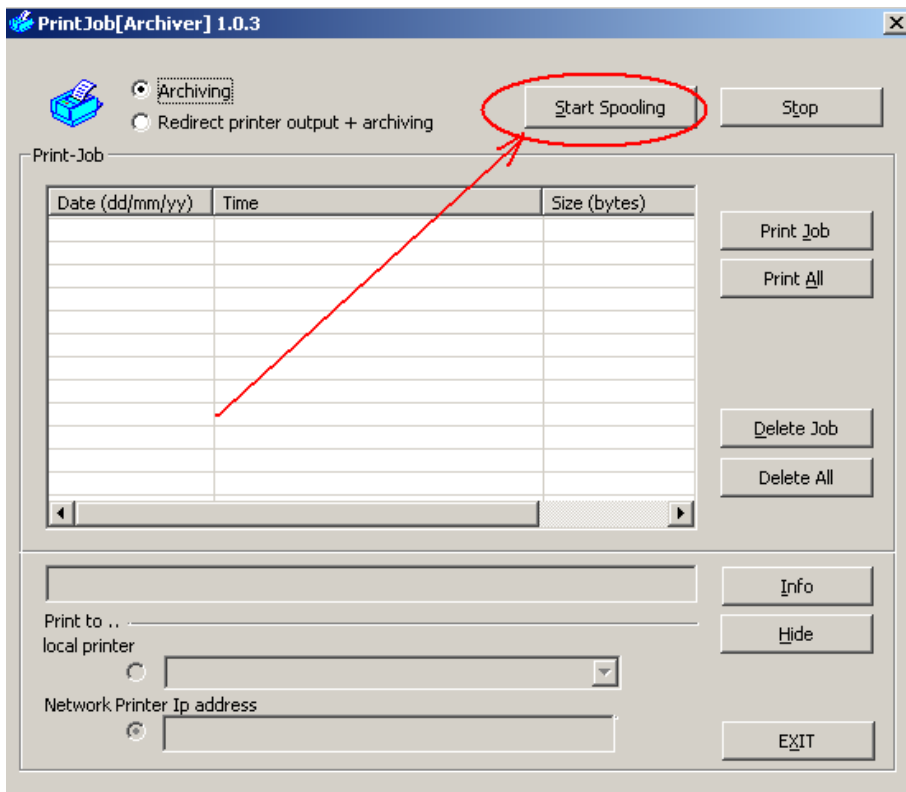
Do you want to print a test page?

Yes

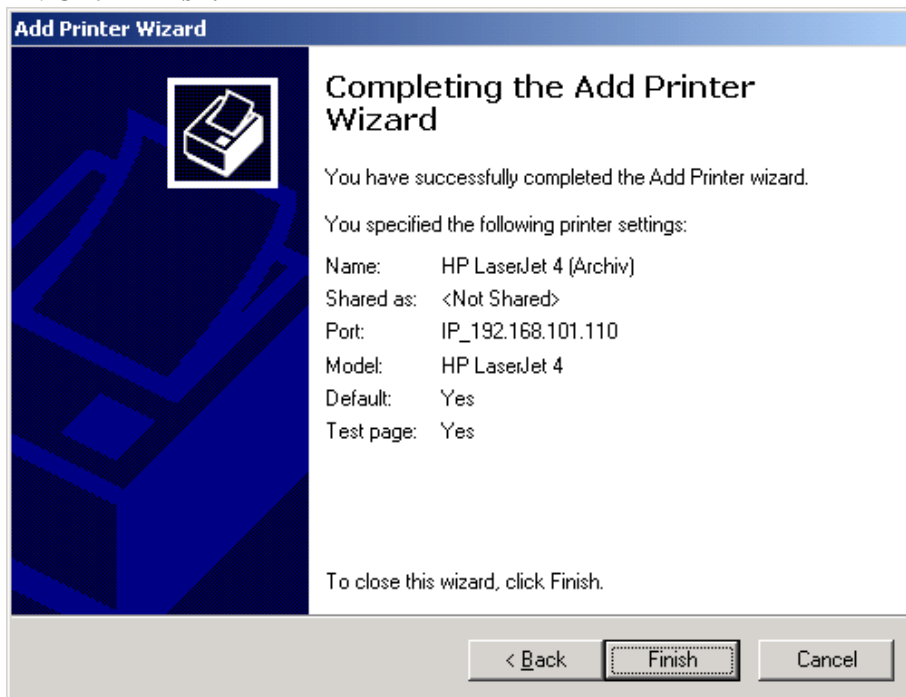
No

< Back Next > Cancel

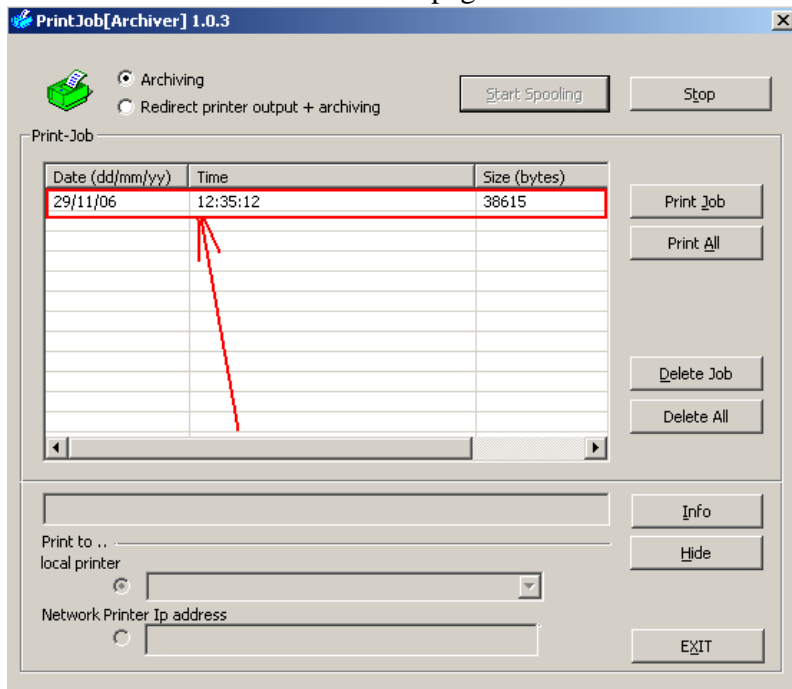
10. Click **Archiving** and **Start Spooling**.



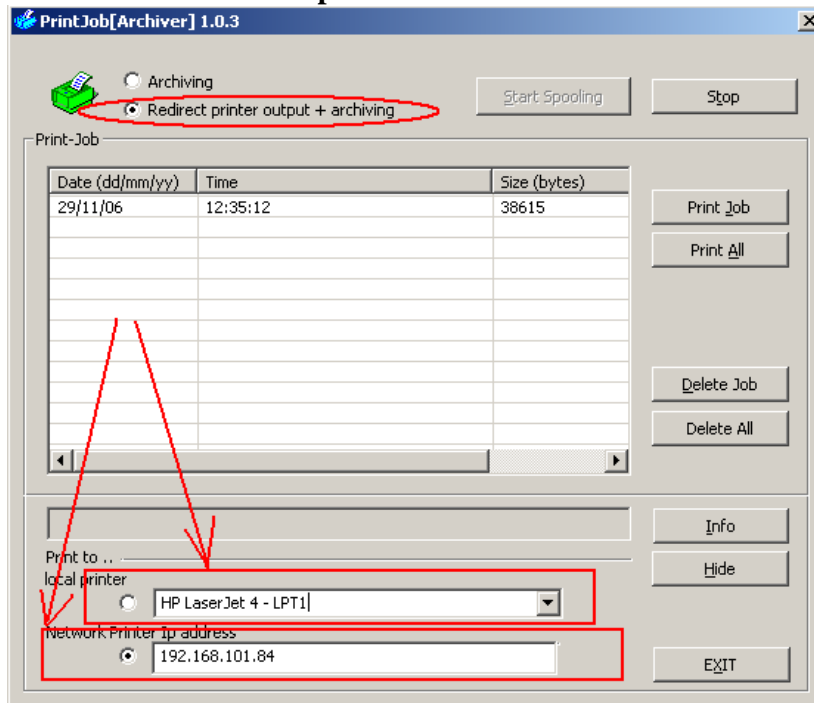
11. Click **Finish**.



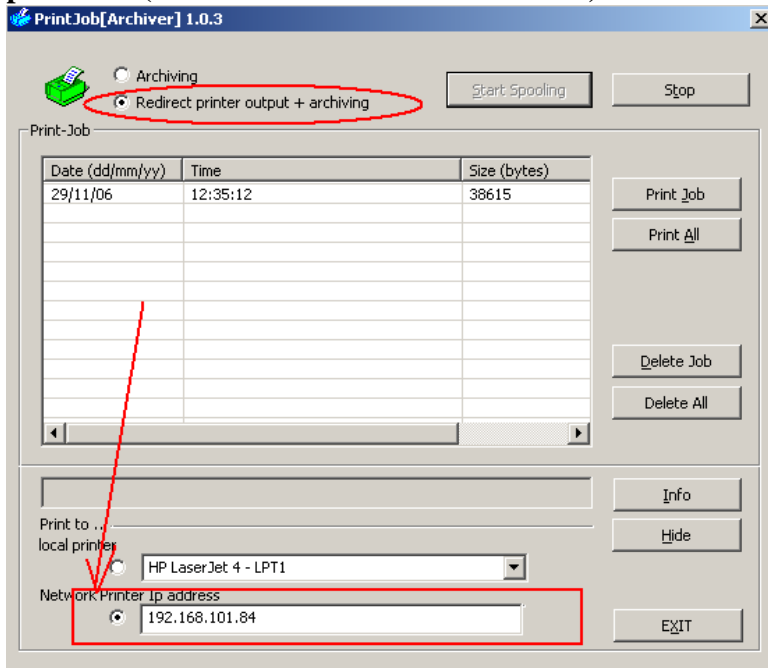
12. The archived document “Test page” is now visible.



13. If parallel printing and archiving is needed, click **Redirect printer output + archiving**. For this option, it is necessary to enter the **Network Printer IP address** or select an **Installed local printer**.



14. Notice, it shows here that **PrintJob[Archiver]** sent a print job to **192.168.101.84 port 9100 (HP LaserJet 4 - Network Printer)**.



15. Notice, it shows here that PrintJob[Archiver] sent a print job to **local printer LPT1**

